

# Pre-Visit Visual and Sensory Guide

## Harbor History Museum

Gig Harbor, Washington





This is the Harbor History Museum. If you come in a car or van, you will drive in here and park. If you come on a school bus, you will park on the street to the left and walk down the wooden stairs.



When you arrive, we will greet you at the front door.



HARBOR HIST

ORY MUSEUM

You will first come into the lobby. The restrooms are to the left.



Your guide will lead you to walk to the right, up some stairs, and down the hall to the Resource Room.



In the Resource Room you will leave your coats and lunches on the tables and then sit down to hear the Orientation.



If you are doing the Pioneer School Experience, you will put on nametag and a vest or pinafore to pretend you are a student in the past. You do not have to wear one if you do not want to.



You will follow your guide to the Schoolhouse.





The schoolmarm will teach you like it is a school day in 1915. She might lead the class in the old-style Pledge of Allegiance. You do not have to say it. The schoolmarm might lead the class in singing. You do not have to sing.



You will have lunch outside the schoolhouse or in the Resource Room, depending on the weather. The schoolmarm might lead you in some recess games.



Later you will visit the galleries. You will see many different objects. Your guide will talk with you about them. There may be people who are not from your school looking at and talking about the objects.

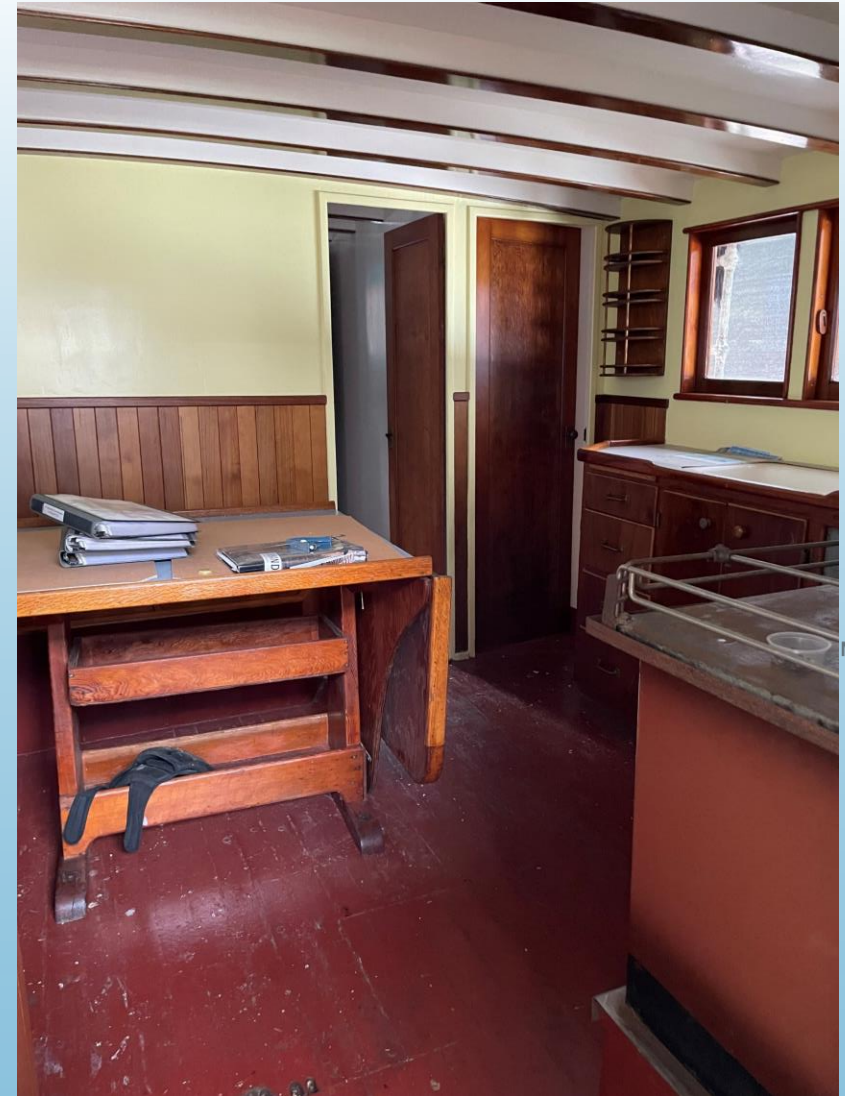


Some things in the galleries you can touch, and some things you cannot.



There are several things in the galleries that people may touch that make loud sounds.

HARBOR



MUSEUM

You will also visit the fishing boat *Shenandoah*. People are working to fix the boat and there may be loud hammering or other sounds. Your guide might lead you onto the boat. Only a few people at a time can fit inside the boat.



The exit is at the front of the building where you arrived.  
Goodbye, please come again!